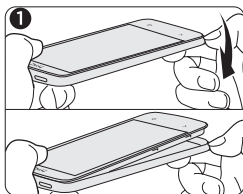


Your HTC Desire 300

Inserting your micro SIM and microSD cards

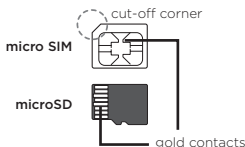
IMPORTANT: USE A STANDARD MICRO SIM ONLY.

Inserting a smaller size SIM (such as nano SIM with an adapter or a modified SIM) may damage the card slot or cause the card to not fit properly.

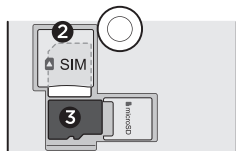


1. With one hand, securely hold your phone facing up.

With your other hand, press your thumb on the corner of the back cover to open the cover. Slowly detach the cover from the phone to remove it.

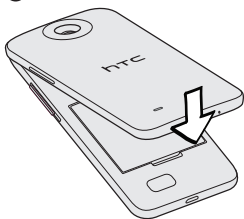


2. With your micro SIM card's gold contacts facing down and cut-off corner facing in, insert the micro SIM into the SIM slot and push it in until it clicks into place.



3. With your microSD™ card's gold contacts facing down, insert the microSD card into the storage card slot and push it in until it clicks into place.

4



4. To replace the back cover, align the phone onto the top part of the back cover first. Then press the sides and the bottom part of the back cover down to lock the cover into place.

Note:

To avoid damaging the VOLUME buttons, don't press the buttons while replacing the back cover.

Want some guidance on using your phone?

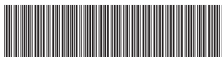
Check out our friendly walkthroughs in the **Tips & Help** app on your phone. Or go to www.htc.com/support/ to find tutorials, the user guide, FAQs, latest news, and more.

© 2013 HTC Corporation. All rights reserved.

HTC, the HTC logo, and HTC Desire are trademarks of HTC Corporation. All other company, product and service names mentioned herein are trademarks, registered trademarks or service marks of their respective owners.

htc.com

Complies with
IDA Standards
DB 104368



91H0xxxx-xxM Rev.A